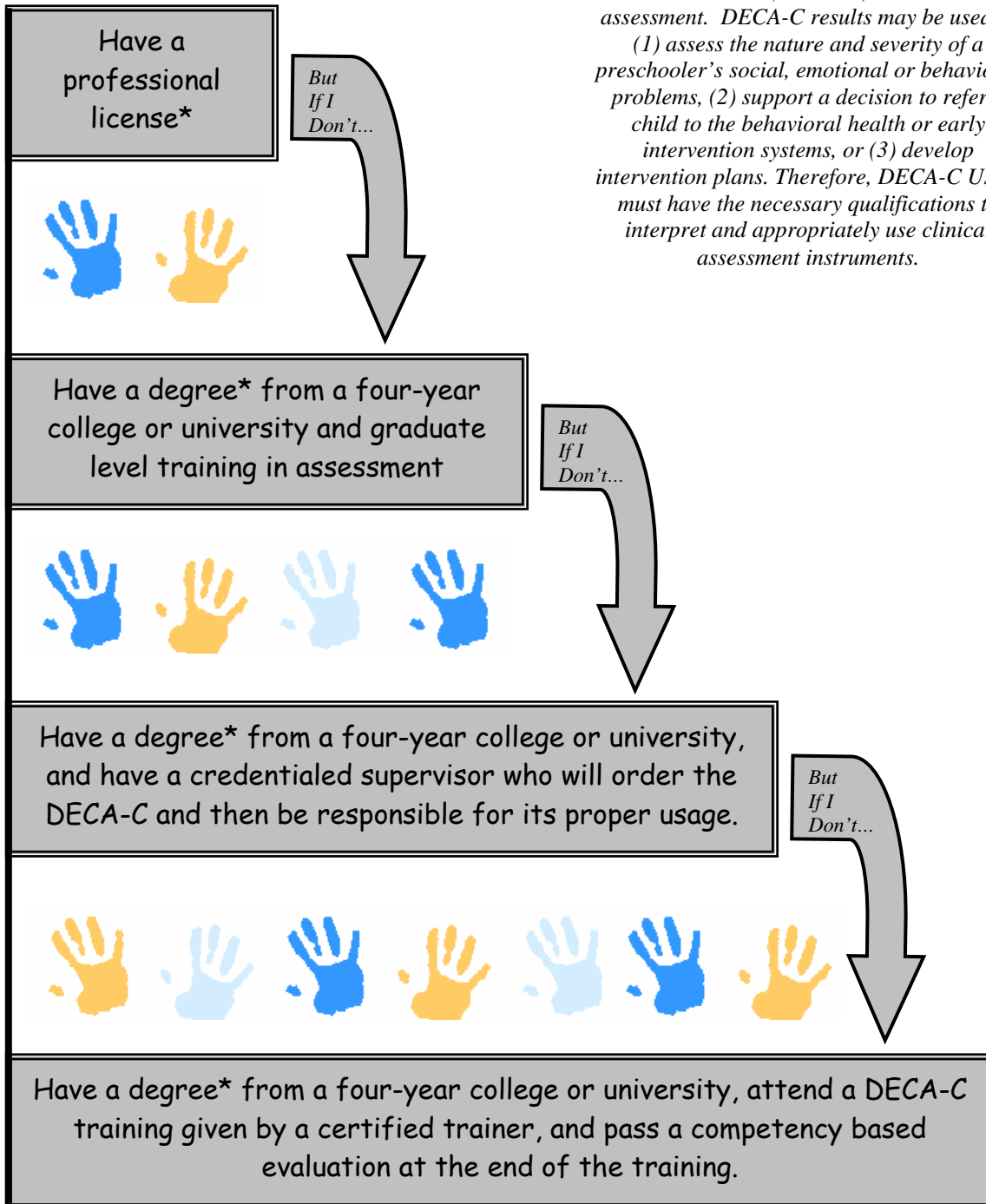


# DECA-C Users Need To:

*The Devereux Early Childhood Assessment Clinical Form (DECA-C) is a clinical assessment. DECA-C results may be used to (1) assess the nature and severity of a preschooler's social, emotional or behavioral problems, (2) support a decision to refer a child to the behavioral health or early intervention systems, or (3) develop intervention plans. Therefore, DECA-C Users must have the necessary qualifications to interpret and appropriately use clinical assessment instruments.*



The license or degree must be in a relevant area such as psychology, social work, early childhood education, or special education.